

ENGINEERS INSTRUCTION NO. E-03

To: CITIFY

Attention: Gemma Broomfield

From: Max Davis Reference: LCE14462 – 043a

Project Name: Hyde Park Place - 248 Unley Road, Hyde Park

Discipline: Electrical Services Date: 09/09/2020

The following instruction details additional socket outlets required within some apartments to power laundry exhaust fans. The Electrical Services Contractor shall note the changes described below and confirm their understanding in relation to the revised arrangement.

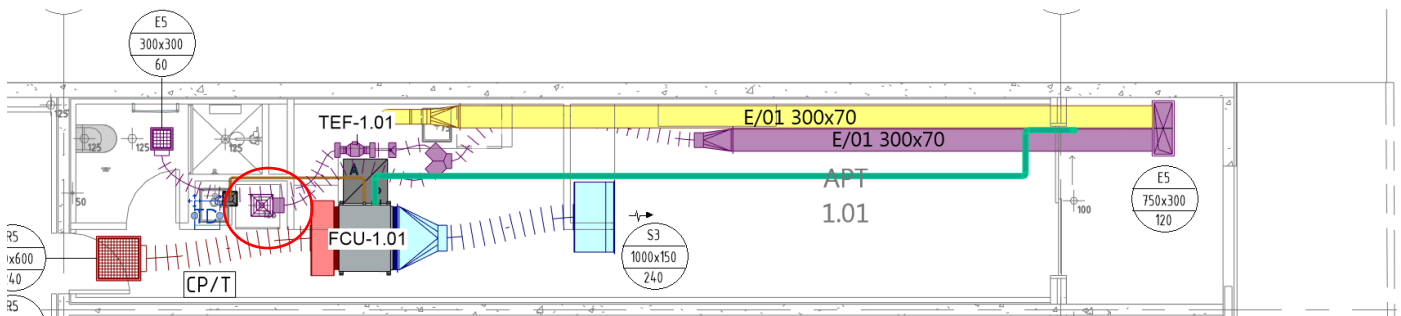
Refer to Sheets LCE14462-E202 to LCE14462-E206

- Provide additional socket outlets (29 off total) to be installed in ceiling space to power new 'header box' Laundry Exhaust Fans (LEF), in apartments:

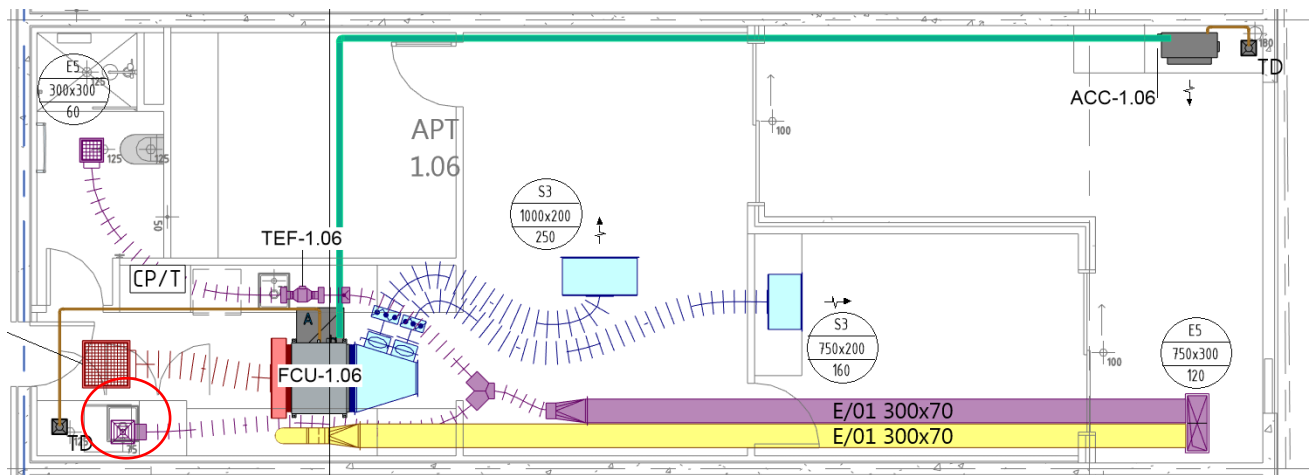
○ Apt 1.01	○ Apt 1.13	○ Apt 3.02	○ Apt 4.08
○ Apt 1.02	○ Apt 1.14	○ Apt 3.04	○ Apt 4.09
○ Apt 1.03	○ Apt 1.15	○ Apt 3.05	○ Apt 4.10
○ Apt 1.04		○ Apt 3.06	○ Apt 4.12
○ Apt 1.05	○ Apt 2.01	○ Apt 3.08	
○ Apt 1.06	○ Apt 2.04	○ Apt 3.09	○ Apt 5.02
○ Apt 1.07	○ Apt 2.05	○ Apt 3.10	○ Apt 5.05
○ Apt 1.08	○ Apt 2.07	○ Apt 3.11	○ Apt 5.06
○ Apt 1.09	○ Apt 2.08		○ Apt 5.08
○ Apt 1.10	○ Apt 2.09	○ Apt 4.02	○ Apt 5.09
○ Apt 1.11	○ Apt 2.10	○ Apt 4.05	○ Apt 5.10
○ Apt 1.12		○ Apt 4.06	○ Apt 5.12
- Socket outlets to be powered from local apartment load centre.
- Provide 2nd gang on local lighting switchplate (labelled 'FAN') within laundry cupboard for control of fan. If no local lighting/switchplate has been included, provide new switchplate for control of fan within laundry cupboard. Note, maintain clearance from sinks/basins in accordance with AS3000 Damp Situations requirements.
- Note mechanical contractor to provide fan with flex and plug, and provide final connection of fan to socket outlet. Electrical contractor to coordinate final location of outlet with mechanical contractor, and allow to adjust on site to suit.

Locations of new header box fans are as per the following sketches (showing mechanical services layout):

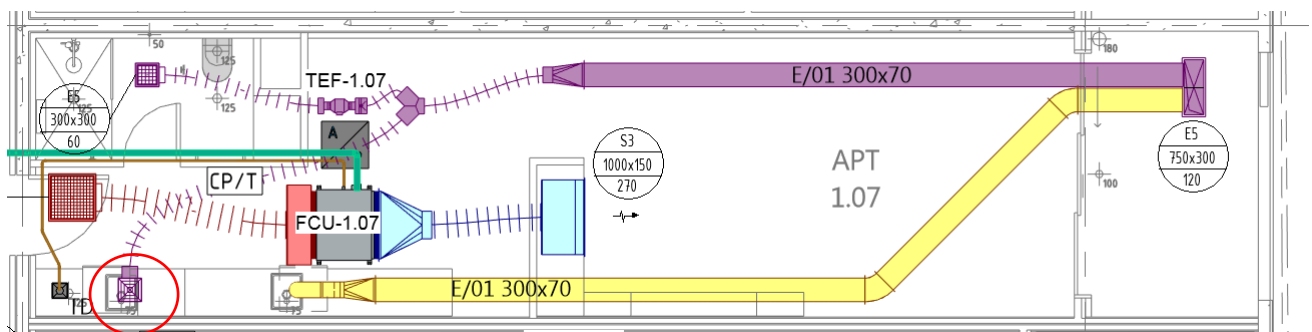
Layout Apt 1.01, Apt 1.02 Apt1.03, Apt 1.04, Apt 1.05, Apt 1.12, Apt 1.13, Apt 1.14 and Apt 1.15



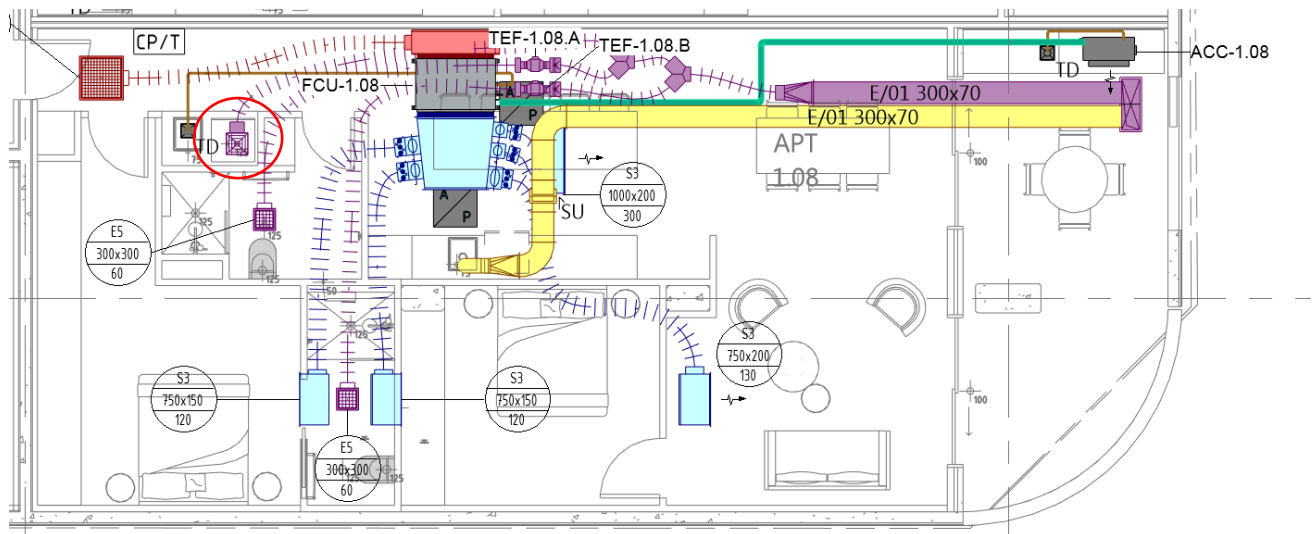
Layout Apt 1.06



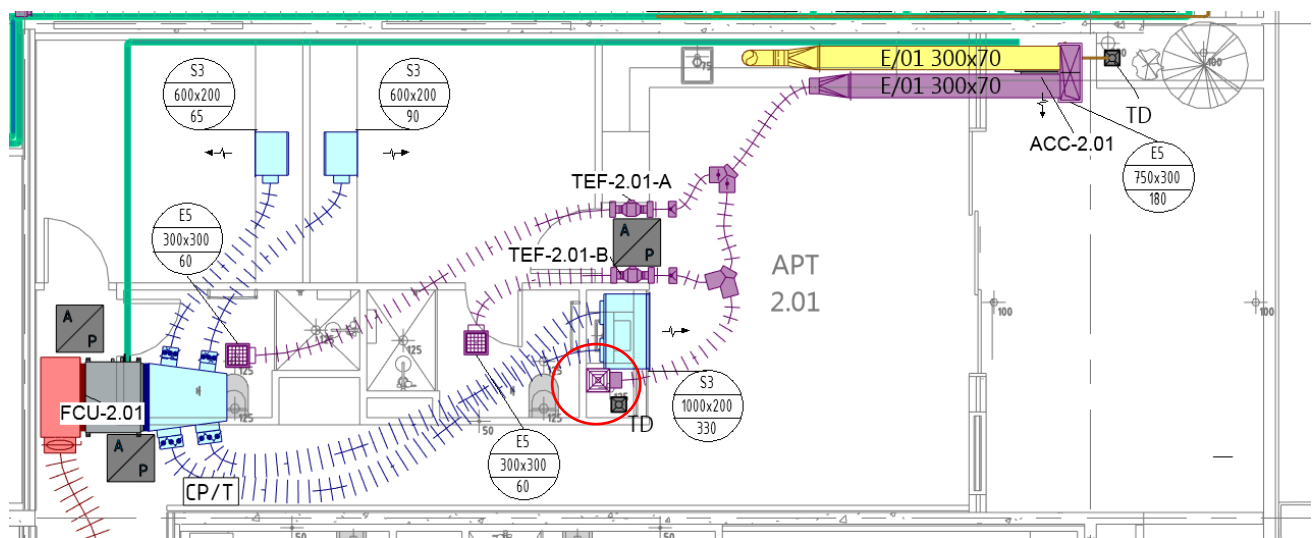
Layout Apt 1.07, Apt 1.10 and Apt 1.11



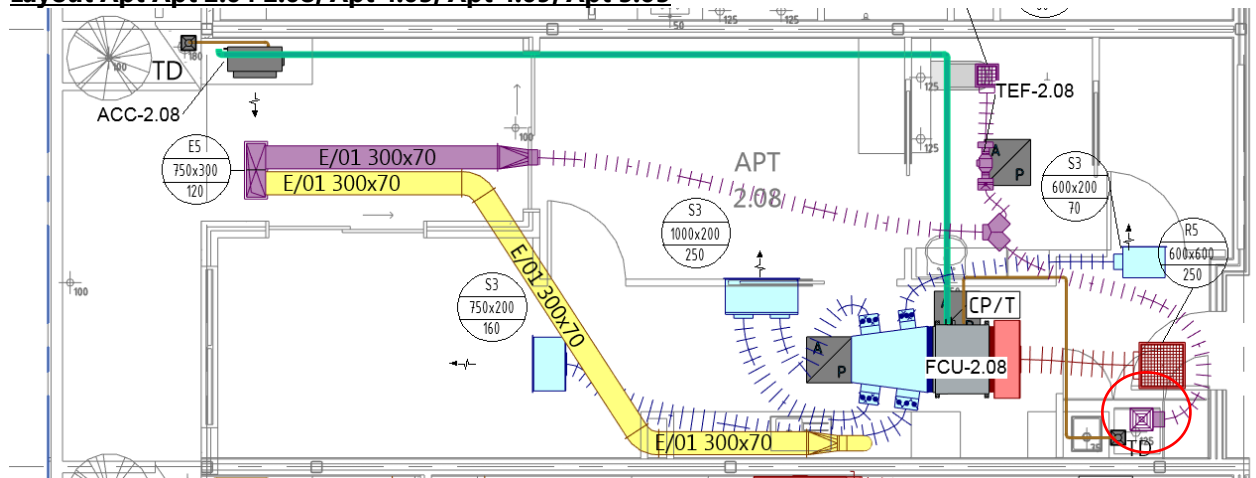
Layout Apt 1.08



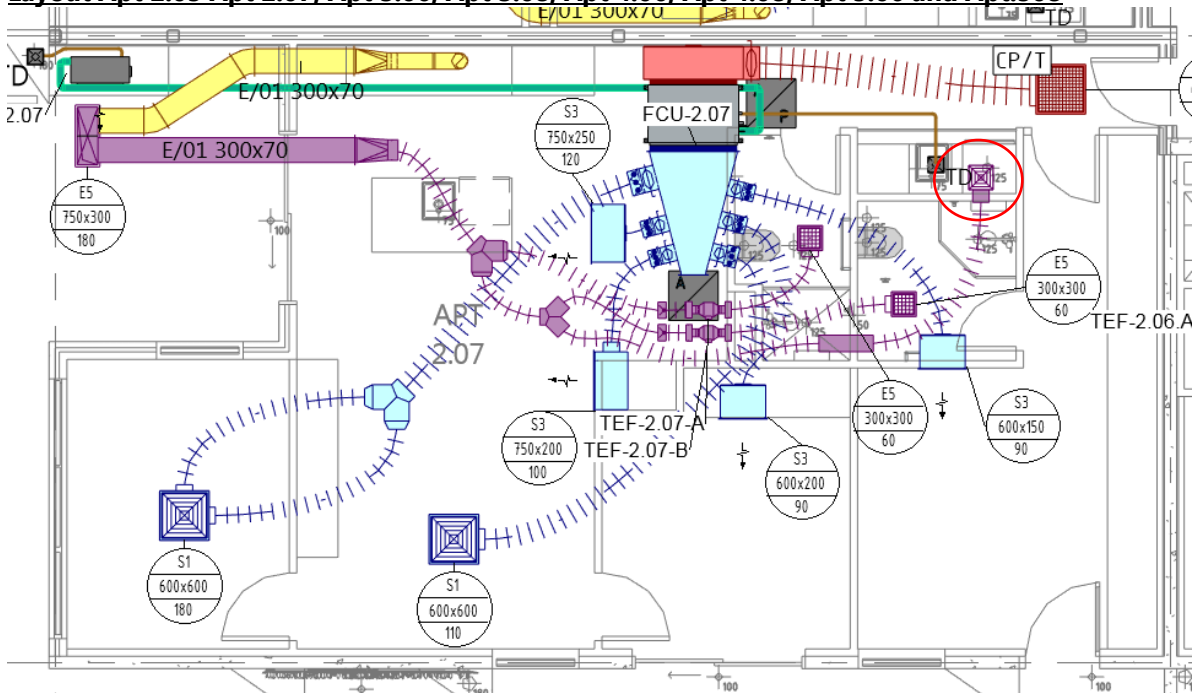
Layout Apt 2.01, Apt 3.02, Apt 4.02 and Apt 5.02



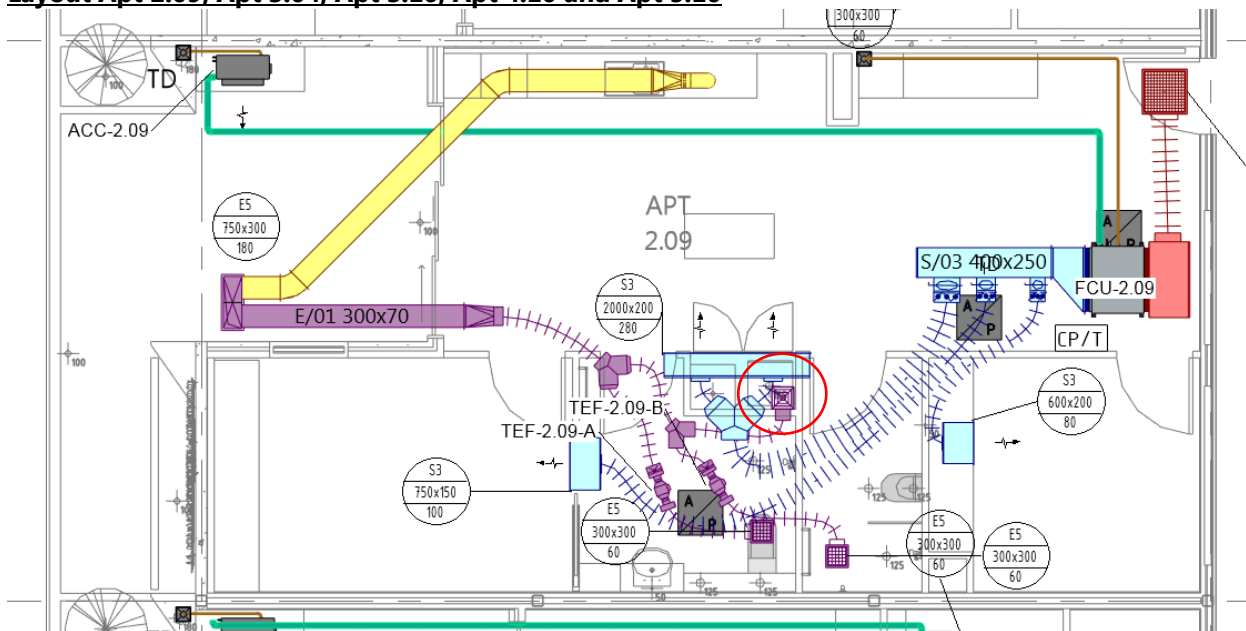
Layout Apt Apt 2.04 2.08, Apt 4.05, Apt 4.09, Apt 5.05



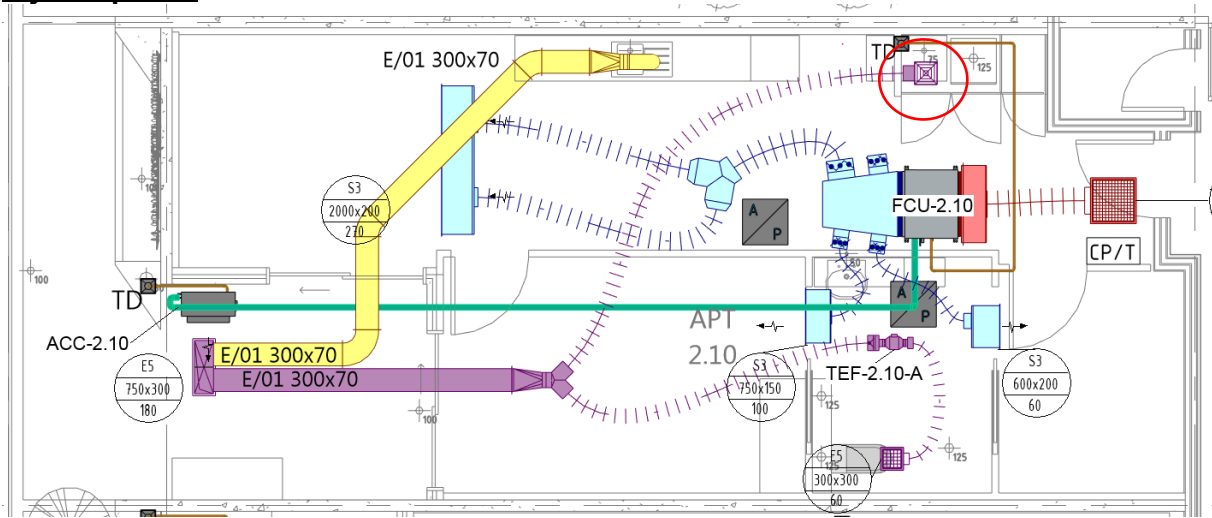
Layout Apt 2.05 Apt 2.07, Apt 3.06, Apt 3.08, Apt 4.06, Apt 4.08, Apt 5.06 and Apt.508



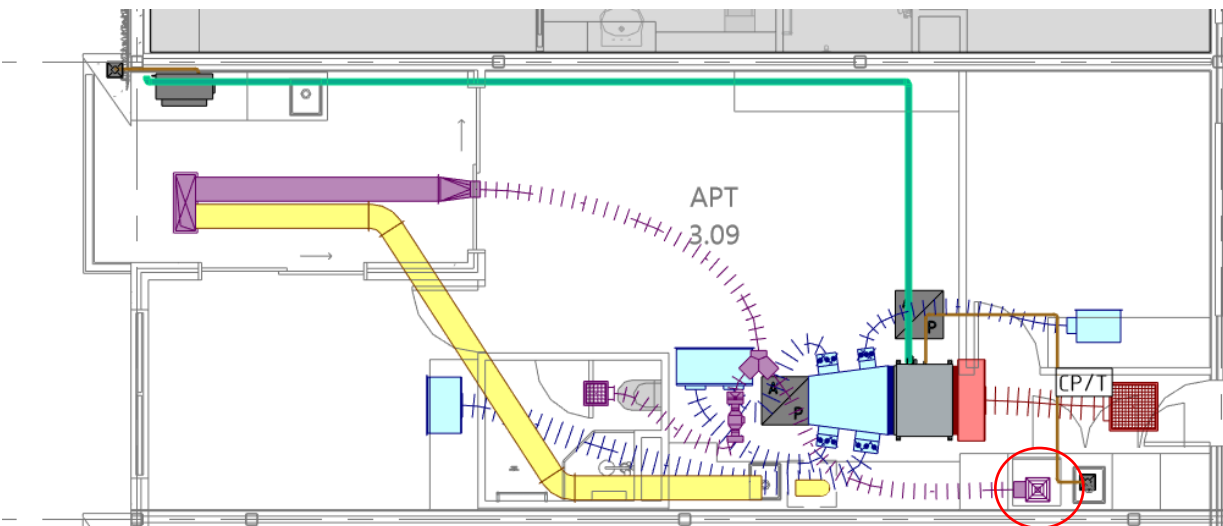
Layout Apt 2.09, Apt 3.04, Apt 3.10, Apt 4.10 and Apt 5.10



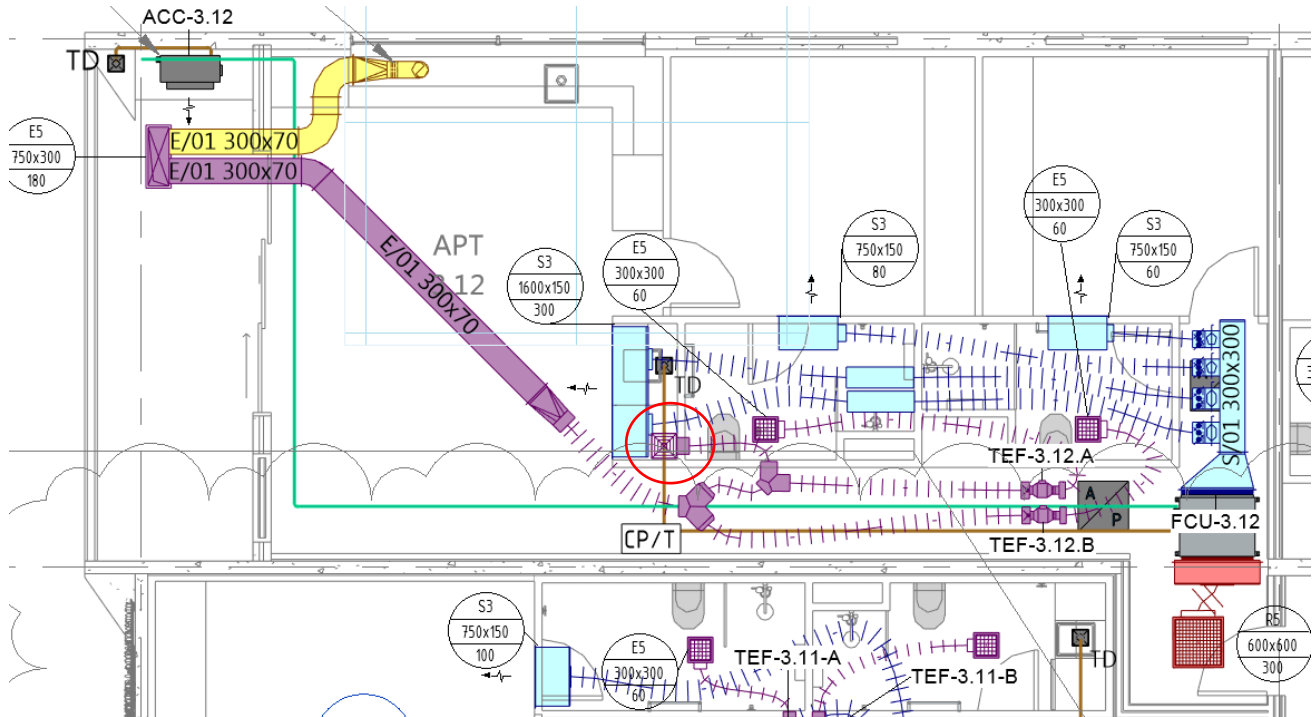
Layout Apt 2.10



Layout Apt 3.05, Apt 3.09 and Apt 5.09



Layout Apt 3.12, Apt 4.12 and Apt 5.12



-
- Undertake works in accordance with the Specification.
 - If Price Variation is applicable, submit for approval prior to commencing works.